

# Hanover

---

Neville Court  
London, NW8 9DB  
£650 Per Week



Hanover are pleased to offer this well presented two bedroom apartment (702 sqft / 65 m2) situated on the 5th floor in a stylish mansion block on Abbey Road. The property comprises two good sized bedrooms with ample storage, two bathrooms (one en-suite), modern fully fitted integrated kitchen and bright & spacious reception/dining room. Further benefits from porter, lift and high ceilings throughout. Neville Court is located within easy reach to St Johns Wood Station (Jubilee Line) and St Johns Wood High Street. Offered furnished or unfurnished. Available 19th September 2022.

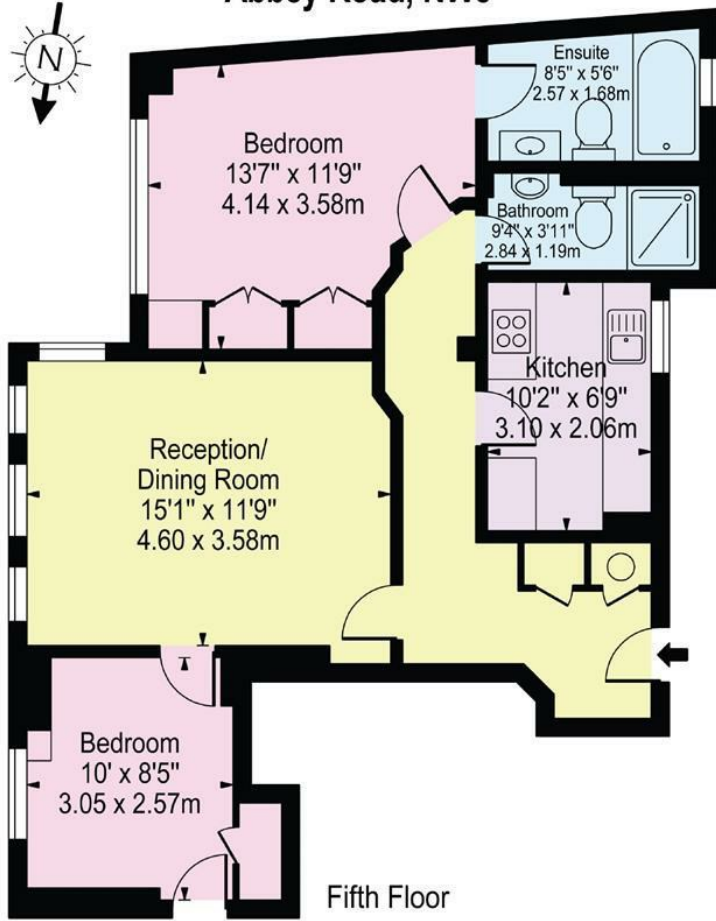
Council Tax Band: D. Security Deposit Equivalent to 5 Week's Rent: £3,250.







Neville Court,  
Abbey Road, NW8



Approx. Gross Internal Area **702 Sq Ft - 65.22 Sq M**

For Illustration Purposes Only - Not To Scale

This floor plan should be used as a general outline for guidance only and does not constitute in whole or in part an offer or contract.  
Any intending purchaser or lessee should satisfy themselves by inspection, searches, enquiries and full survey as to the correctness of each statement.  
Any areas, measurements or distances quoted are approximate and should not be used to value a property or be the basis of any sale or let.

D

